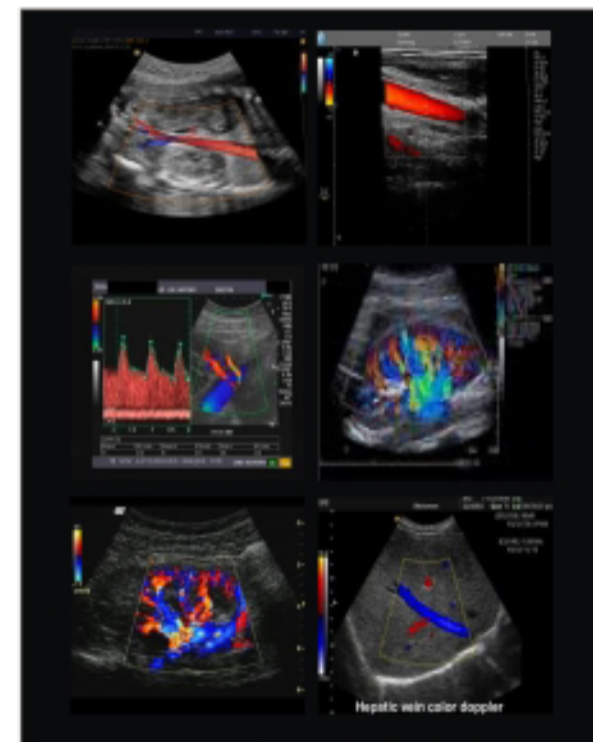


DNP

COLOR PRINTER **New!!**
DS-RX1



6" X 8"

Specifications

Model : DS-RX1
 Print Method : Dye Sublimation thermal transfer method
 Print Mode : High-resolution mode
 Resolution : 300dpi
 Surface : Glossy/Matt
 Print Size : 6x8 | 152x203mm
 Number of Prints/Roll : 6x8 | 350 Images
 Print Speed : 6x8 | Approx 27 Seconds/Prints

Ribbon format : YMC+Overcoat
 Interface : USB 2.0 Type-B Connector
 Driver compatible OS : Windows XP Vista (32/64bit), 7 (32/bit)
 External Dimensions : 322(W)x351 (D)x281(H)mm
 Weight : Approx, 13.8kg
 Power : AC100-240V 50/60H
 Various Applications for Printing Solutions : Ultrasound , CT , MRI , Fluroscopy , Oncology , Nuclear Medicine

UPASANA ENTERPRISES

AN ISO 90001:2008 CERTIFIED ORGANISATION

Flat no 105, 1st floor , "C" wing, Sai Shraddha Complex, Station Road, Behind bus Depo, Vikhroli (E), Mumbai -400 083.

Tel.: 022-2574 0383 Telefax : 022-2574 0112 • Mob.: 98211 21823/ 98694 73756 / 98215 26497

Email.: upasanaenterprises@yahoo.com • Web.: www.upasanaenterprises.com

Features

Faster Printing Speed

Maximum 20% faster than DNP DS-RX1.*1

Economics

- Affordable hardware ensures low initial investment.
- Low-cost approach with its economic photo consumables.

*1 Actual printing speed varies depending on printing condition.

Throughput

With an improved throughput, the RX1HS produces up to 290 prints per hour. (4x6 prints / high-speed mode / Gloss finish)

Large Print Capacity

Minimal consumable exchange ensures easy maintenance.

Great choice of formats

Providing flexibility on photo formats.



3.5"x5"
(89x127mm)



4"x6"
(101x152mm)



6"x8" (152x203mm)



2"x6"
(51x152mm)



5"x7" (127x178mm)



3.5"x5" perforated media



4"x6" perforated media

Glossy / Matte

Glossy and matte are available for all sizes.



Printer specification

Model name	JR10-M01
Print method	Dye sublimation thermal transfer
Resolution (dpi)	300x300 (High speed mode), 300x600 (High resolution mode)
Print size	2"x6" 51x152mm 3.5"x5" 89x127mm 4"x6" 101x152mm 5"x7" 127x178mm 6"x8" 152x203mm
Print speed (High-speed mode, Gloss finish)	4x6"(101x152mm): Approx 12.4 sec 5x7"(127x178mm): Approx 19.9 sec 6x8"(152x203mm): Approx 21.9 sec
Print finish	Gloss / Matte
Buffer memory	64MB
Interface	USB2.0, Type B
Printer driver	Windows XP, Vista(32/64bit), 7(32/64bit), 8(32/64bit)
Power supply	AC100V - 240V, 50/60Hz
Dimension	(W)322 x (D)351 x (H)281 mm
Weight	Approx. 14kg

*Specification is subject to change without prior notice.

Consumables

RX1HS MEDIA SET (4x6)	700 prints/roll x 2 set
RX1HS MEDIA SET (6x8)	350 prints/roll x 2 set
RX1HS MEDIA SET (4x6) 2S*	700 prints/roll x 2 set

*perforated media

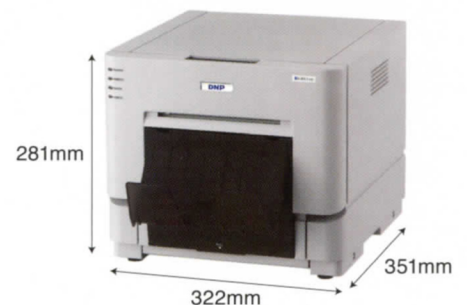
Easy cut along perforated line.



Get two pictures!

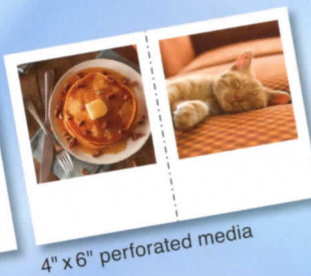
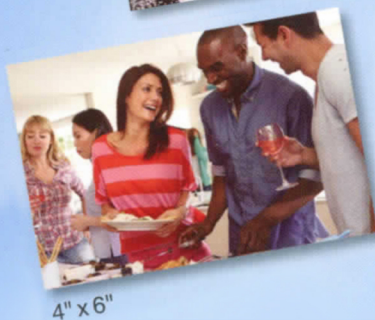
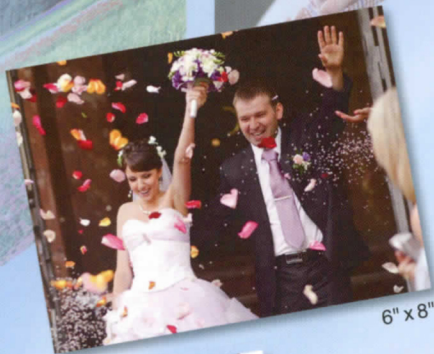
*Dedicated perforated media is required to use this feature.

Dimensions



- **Faster Printing Speed**
- **Low Investment**
- **Economic Media**
- **Large Print Capacity**

**Improved
Speed**



The Printer that expands your business with faster speed, high quality and affordability!